

ASA Statistical Consulting (CNSL) Section Treasurer's Report

Ann Lazar, Secretary/Treasurer, August 2013

The overall balance has decreased for the first time since 2006 from \$11205 in 2011 to \$10420 in 2012, with expenses approximately exceeding revenues by \$786. Note, ASA advised sections to reduce cash on-hand to no more than twice the annual operating expenses (for CNSL, usually \$5000-\$10000). Between 1999 thru 2006 cash on-hand has been reduced due to service increases, including additional travel awards. In 2001 a member survey was conducted, which caused a one year increase in expenses. From 1999 thru 2006, expenses exceeded revenues. Since 2006, CNSL cash-on-hand is roughly equal to expenses except for this year.

Actual Revenue Expenses 1/1/12-12/31/12

Revenue:

Section Dues	\$5030
Interest and Dividends	\$413
Donor Contribution	\$50
Total Revenue	\$5493

Expenses:

Food for Business Meeting at JSM 2011	\$1299
Food for JSM Catering Business Meeting 2011	\$1618
Roundtable	\$175
Total Food Functions	\$3092
Contractor- Logo (2010)	\$250
Awards & Plaques* (2012=\$1250; 2011=\$1500)	\$2937
Total Expenses	\$6279

Net Deficit

\$786

Fund Balance As of Dec 31, 2012:

\$10420

*Note, in 2012, one travel award was eligible; usually two travel awards provided at \$750 x 2= \$1500.00 in addition to \$500 contributed session;

CNSL Membership

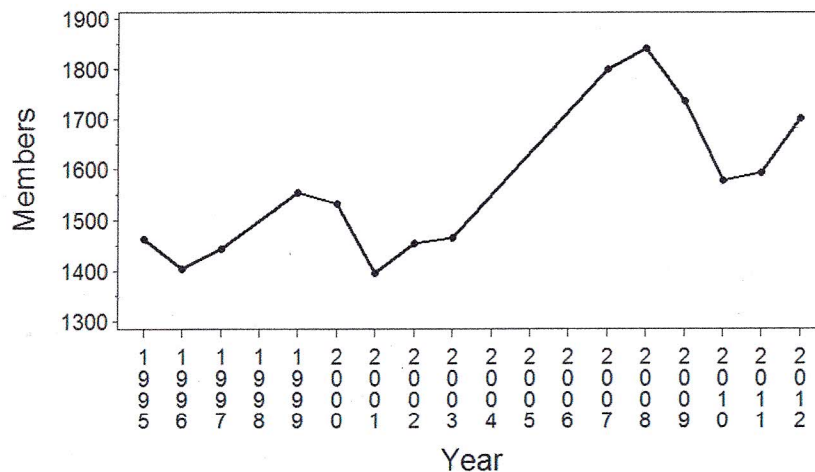
Membership increased in 2008, most likely due to the offer for free membership.

Between 1995 thru 2003, membership fluctuated between 1400-1600 members.

In 2007 and 2008, new members exceeded expired members.

In 2009, membership surged to approximately 1800.

This year our membership surged to 1704 from 1596 from the previous two years. The number of new members (n=488) were nearly equal to the number of expired members (n=491).



	06/07	07/08	08/09	09/10	10/11	11/12*	12/13
Member Add/Drop							
8/1 thru 7/31 (*=7/25)							
New Members	507	663	707	454	375	375	488
Expired Members	-243	-304	-583	-629	-566	-403	-491
Not in ASA	180	210	287	318	312	228	277
Still in ASA	63	94	296	311	254	175	224
Net Membership	+264	+359	+124	-175	-191	-28	-3
Total Membership on							
8/1 (*=7/25)	1801	1843	1890	1737	1580	1596	1704
Dues-paying			1314	1560	1513	1329	1354
Free (no dues)			576	177	67	267	350